



you can hear the difference
High performance speakers from Swans



H4
Multimedia Active Speaker System

HiVi Inc. (USA)
Swans speaker systems, Inc.
11630 Goldring Road, Arcadia, CA 91006
Tel: +1-626-930-0606 Fax: +1-626-930-0609

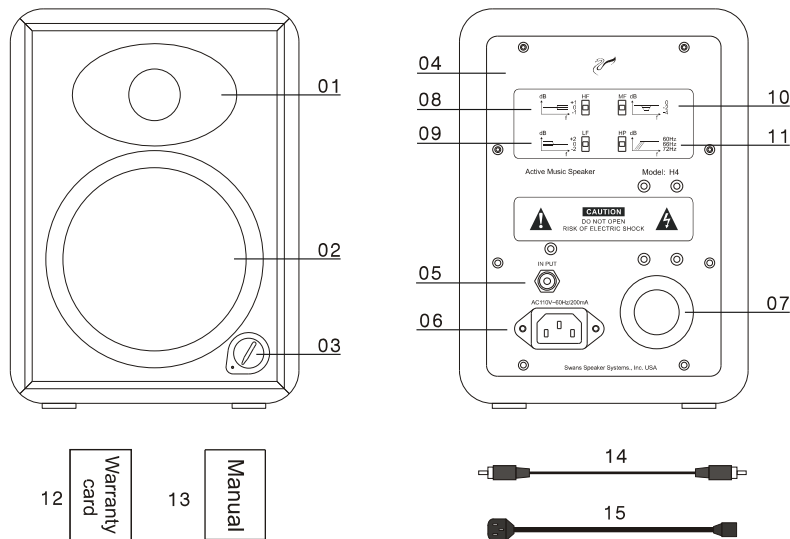
HiVi Inc. (China)
Guangzhou Hi-Vi Electrical Appliances Co., Ltd
No.13, Sansha Industrial Zone, Dongchong Town,
Panyu District, Guangzhou, China
Tel: +86-20-3490 1885 Fax: +86-20-3490 1863

www.hivi.com

I. Unpacking

This speaker adopts fine packing material to protect it from damage during shipping. In the box, you should find: speaker, power cable, connection cable, manual, warranty card, and certificate.

II. Figures of speaker functions and electrical parts:

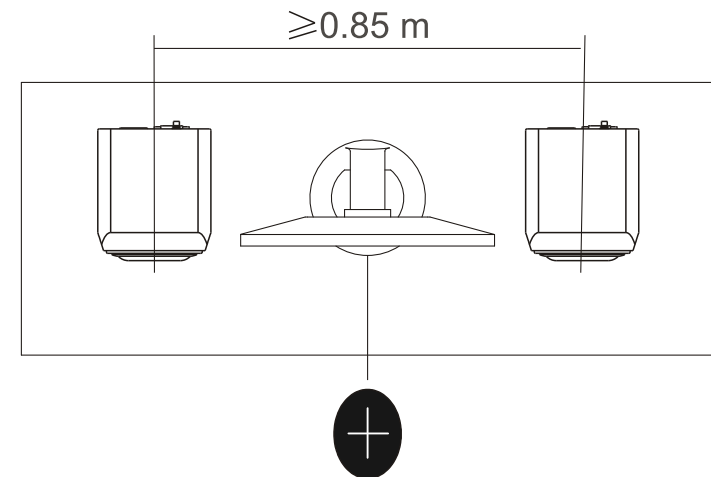


1. Tweeter
2. Woofer
3. Power switch/volume control
4. Amplifier back panel
5. RCA Input
6. Power socket
7. Rear port
8. HF: High Frequency
9. LF: Low Frequency
10. MF: Midrange Frequency
11. HP: Low Cut-off
12. Warranty card
13. User's manual
14. Connection cable
15. Power cable

III. Speaker placement and environment

1. Speaker placement

H4 active speakers have an independent amplifier built into each speaker. When configured as a 2.0 system, the speakers should be placed in front and to the Left / Right of your listening position. When listening to music, the distance between the two speakers should be over 85cm so that a natural sound field can be achieved. Adjust the angle and distance of the subwoofer until optimal sound accuracy and imaging is achieved.



2. Listening environment

In order to get best sound, not only do we recommend using high quality components to match the speakers, but also a good listening environment. The placement and the size of the listening area will influence the sound quality.

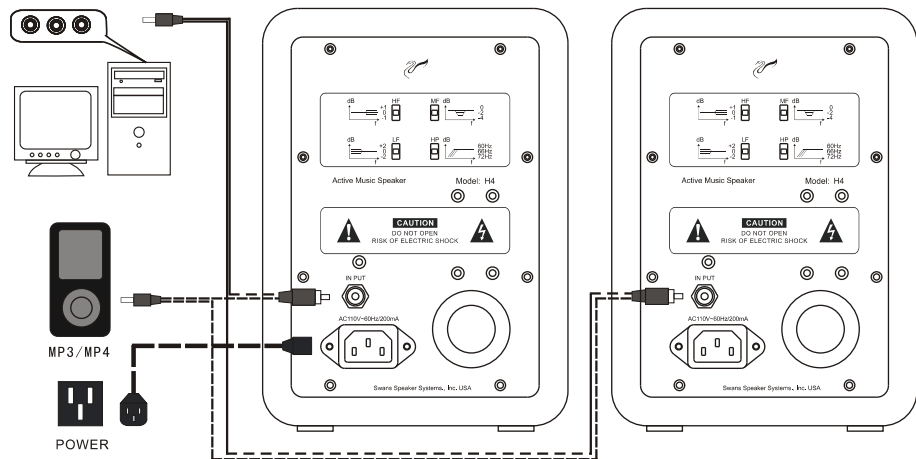
A few simple suggestions to optimize your listening environment:

- a) Carpet the floor to avoid the sound reflection
- b) Decorate the wall with cloth or other sound absorbing materials to improve sound quality.
- c) Use thick curtain to avoid the sound reflection by glass windows.

IV. Connecting system

In the back of the H4, there is a Power Socket, Audio In, and 4 sets of switches to adjust the acoustic performance.

1. When combined to form 2.0 speaker system, connect as below:



2. H4 2.0 system connecting with computer, MP3 / MP4

Insert the connection cable into the INPUT on the back panel of the speaker and the OUTPUT of the computer sound card or the OUTPUT of the MP3 / MP4.

3. H4 2.0 system connecting with DVD player

Insert one end of the connection cable into the INPUT on the back of the speaker, insert the other end into the OUTPUT of the DVD Player.

4. H4 5.1 system connecting with the subwoofer

Insert one end of the five speaker cables into the OUTPUT, FL, FR, SL, SR, C on the back of the subwoofer, insert the other end into the INPUT of the H4. Fully insert the plug to make sure the connection is firm to avoid influencing sound quality.

5. Plug in the H4 power cable to the AC outlet

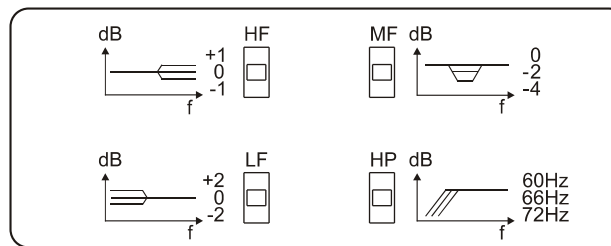
6. Check all steps above to make sure all connections are all right.

Notice:

- a. Please make sure the power is switched off when connecting the power cable.
- b. Make sure connections are firm to avoid influencing sound quality.
- c. The quality of cables will directly influence the sound quality. We suggest using the provided signal cables, however you may also choose to purchase 2 partynd audio cables.

V. Listening

1. Turn on the computer or other sound source, turn on the volume control to Minimum (0)
2. Play the MP3, CD, and turn up the volume gradually.
3. Adjust the volume control to have proper volume. You can enhance or attenuate the strength of the high, mid, or low frequency sound by adjusting the four function wave band keys (see below)



HF: High Frequency adjustment

- Switch to "0", the high frequency will be flat
- Switch to "+1", the high frequency will be increased 1dB
- Switch to "-1", the high frequency will be reduced 1dB

MF: Mid-range adjustment

- Switch to "0", the mid-range will be flat
- Switch to "-2", the midrange will be reduced 2dB
- Switch to "-4", the midrange will be reduced 4dB
- When the speaker is placed on a bigger desk, we suggest switching to "-2" or "-4"

LF: Low frequency adjustment

- Switch to "0", the low frequency will be flat
- Switch to "+2", the low frequency will be increased 2dB
- Switch to "-2", the low frequency will be reduced 2dB

HP: High pass filter

- Switch to "60Hz", then the cut-off low frequency is 60Hz.
- Switch to "66Hz", then the cut-off low frequency is 66Hz.
- Switch to "72Hz", then the cut-off low frequency is 72Hz.

Notice :

- A) As the H4 is a Hi-End multimedia system, we suggest using a high quality sound card so that it can produce the best possible high-fidelity sound. Using a poor quality sound card will degrade the sound quality.
- B) Please do not have the volume turned up to the maximum while turning on the power. The amplifier or drivers could be damaged.

VI. Break-in

Break-in refers to the aging period for the speakers to where they perform best acoustically. Upon purchase the speakers are not broken-in. A period ranging from 48-100 hours of usage is recommended before both the amplifier and speaker drivers behave optimally.

VII. Maintenance

H4 can be operated under normal conditions without requiring any maintenance. Avoid using any corrosive liquids or gases on the surface of the cabinet or on the speaker drivers. Do not place in high temperatures, moist conditions, or sunshine for long periods of time. For cleaning be sure to use a detergent without any strong chemicals.



Avoid magnets



Do not place in direct sunlight for extended periods of time



Do not place in high heat or humidity for extended periods of time



Do not touch the drivers with hands



Avoid corrosive liquids and gasses

VIII. Trouble shooting

1. Problems with sound quality.

A. Please check and make sure all drivers have sound or not? Is there any problem with the speaker?

b. Please check if the connection cables is firmly connected with the OUTPUT of the computer sound card or OUTPUT of the line output.

c. Please check if the switches on the amplifier back panel are in the right position.

2. No sound at all

a. Please check if the power cable is connected well, if the power switch is on.

b. Please check if the signal cable between the speaker and the sound source is short-circuited?

C. Please check if the sound source is set up properly?

d. Please check if the volume is on minimum?

3. Only one speaker has sound

a. Please check the balance controls on the sound source and make sure it is set to the middle position.

B. Exchange the defected connection cable with the normal cables to see if it's the problem for speaker, connection cable or for AV amplifier.

IX. Warranty

If the problems still exist, please contact the local dealer to handle.